



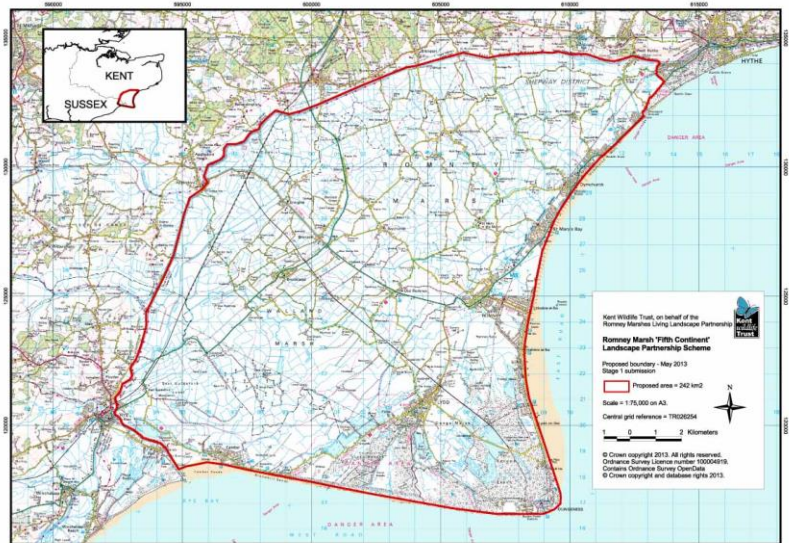
LOTTERY FUNDED

SPECIFICATION FOR THE SENTINELS ON THE MARSH - FIFTH CONTINENT LANDSCAPE PARTNERSHIP SCHEME

Kent Wildlife Trust (KWT) on behalf of the Fifth Continent Landscape Partnership (FCLP) is seeking to appoint a 'Community Archaeology Consultant' as part of the Hunt for Romney Port Project for the Continent Landscape Partnership Scheme funded by the Heritage Lottery Fund (HLF).

Background

Romney Marsh Romney Marsh is a landscape of remote countryside, open skies and tranquil villages. In parts nationally and internationally important for wildlife, the Marsh supports a wide range of habitats and many rare and endangered species of plant and animal. They are also of great historical importance, containing the Royal Military Canal – the third longest defensive monument in the British Isles – together with several of the Cinque Ports, and many medieval churches and other heritage features. Consequently, the area is protected by a range of designations including Site of Special Scientific Interest (SSSI), Special Area of Conservation (SAC), National Nature Reserve (NNR), Local Wildlife Site (LWS) and Scheduled Ancient Monument (SAM). However, over the last few decades, the Romney Marsh landscape has changed dramatically through the intensification of arable farming and increase of turf growing. In addition, most of the remaining grazing marsh is now improved grassland. There has also been an increase in tourism and industry, including the nearby Dungeness power stations. Despite the economic prosperity brought to the area by these activities, the area still has some of the most deprived wards in England and the area is now faced by the challenge of how to maintain sustainable rural communities, protect the unique heritage of Romney Marsh and increase the quality of life for local people in the current financial climate and with the decommissioning of Dungeness A and decommissioning of Dungeness B an imminent prospect.



The Romney Marsh Living Landscape is of distinctive character, supports sustainable farming, is rich in wildlife and history, and is enjoyed as a place to live, work and spend leisure time. The Fifth Continent Scheme is an initiative by the Romney Marsh Living Landscape Partnership which secured funding from the Heritage Lottery Fund (HLF) for a variety of investigations, habitat improvements, community engagement opportunities and training programmes for the people and wildlife of the Romney Marsh area. Kent Wildlife Trust is leading on the Scheme. The geographical area covered by the Fifth



continent Scheme is the land to the South and East of the Royal Military Canal, inside the red boundary. The Eastern boundary stretches to West Hythe.

The Fifth Continent Scheme aims to deliver a suite of projects outlined in the Landscape Conservation Action Plan (LCAP) which will enhance our existing knowledge base regarding the heritage and development over time of Romney Marsh and its unique landscape; provide a clearer understanding of the current condition of both the physical and socio-economic resilience of the area; and fully engage local communities and other stakeholders in acknowledging, strengthening, protecting and celebrating all that makes this landscape so important. Through this process the many diverse communities, habitats and landscapes of the Marsh will be better equipped to demonstrate the resilience that has created the Romney Marsh landscape in the first place. The strategic aims of the Landscape Partnership Scheme are:

- Facilitate the restoration, recreation and enhancement of the built and natural heritage of the area
- Put the communities and people of the Marsh back at the centre of their landscape and heritage and enhance opportunities for visitors and locals alike
- Develop opportunities for learning and skills development

An application by the Fifth Continent Project Board (led by Kent Wildlife Trust) to the HLF Landscape Partnership Scheme has been successful. The Delivery Stage (which runs from March 2017 to December 2020) is now in progress. The Scheme comprises of a suite of projects. One of these is the Hunt for Romney Port project. This project comprises the historical and archaeological analysis of land likely to hold evidence of the location of the historic port.

Available Funding

There is £7,500 available to cover 25 days of work @ £300 per day. The work will be funded through the Heritage Lottery Fund.

Timetable

This contract will commence in March 2019 and run until June 2021

Programme of Work

- The Community Archaeologist is to spend 2 days in spring 2019 to review information collected to date about Romney Port and help identify potential survey areas and help draw up a template survey form.
- They will assist the Fifth continent Heritage Officer in running 'Survey Weekend 1' across two days and 'Survey Weekend 2' across two days (summer 2019) with up to 20 volunteers involved each day. This will involve fieldwalking, metal detecting and geophysics surveys.
- They will be required to spend 3 days assisting the Fifth Continent Heritage Officer in writing up the results of the survey weekends and the volunteer LiDAR surveys. The output will be a written report and a series of GIS Shapefiles.
- They will be required to spend time on site undertaking test-pit surveys with volunteers and the Heritage Officer i.e. 2 days as part of a 'Test Pitting Weekend 1 and 2 days as part of a Test Pitting Weekend 2 (spring/ summer 2020)
- They will assist with post-excavation tasks and the writing up of the test pit exercise over 5 days
- Provisional – they will undertake a further season of evaluation work with volunteers and the Heritage Officer, depending on the results of the test pits, in summer/ autumn 2020. 2 days will be spent in the field and 5 days on report writing.

Total = 25 days.

Outputs

Identification of candidate locations for field survey
Support the Heritage Officer in drawing up a template for survey form
4 days support (total) for survey weekends 1 and 2
Contribution to writing up the survey weekends fieldwork
4 days support (total) for test-pitting weekends 1 and 2
Contribution to writing up the test-pitting surveys
Provisional additional fieldwork and report writing

Skills required

Experience of carrying out archaeological excavations to at least supervisor level
Experience of urban archaeology fieldwork
Awareness of Health and Safety issues in as much as they apply to a community archaeology project
Experience of working with volunteers, including educational groups, on fieldwork projects
Experience of delivering on site training to volunteers
Experience at working with volunteers on post-excavation activities
Experience of producing reports of community archaeology activities
Familiarity with GIS and access to GIS software

Desirable

Geo-archaeological experience

Special Considerations

The Community Archaeologist will work closely with the Heritage Officer to develop and deliver the 'Programme of Work' elements listed above
The final reports will be the property of Kent Wildlife Trust. All those involved in their compilation will be credited
The Community Archaeologist (consultant) will be required to sign a contract covering the works outlines in this brief
Those submitting a bid should also read the project details provided alongside this brief

Health and Safety

The contractor will exercise all reasonable skill, care and diligence in undertaking and carrying out work and will work to adequate health and safety regulations
The contractor will be required to have £5M public liability insurance cover

Communication

The Heritage Officer will be the main point of contact for the implementation of this contract
Any queries or difficulties in implementing the project should be communicated to the Heritage Officer as soon as possible as they will be keeping relevant partners from the Fifth Continent Project Board informed of progress, difficulties etc.

Submission of Quote

Experience

The contractor is required to outline their qualifications and/or experience of undertaking similar work outlined within this specification. Examples of previous work may be listed or provided.

Presentation

The contractor is at liberty to present his/her quote (and supporting information) in any format they feel would best present their case. Provision of an itemised timetable would be welcomed.

Quote Contact

Quotes are to be submitted by January 31st 2019 via email to Lucie.Bolton@kentwildlife.org.uk or by post to The Fifth Continent Heritage Officer , Kent Wildlife Trust, Romney Marsh Visitors Centre, Dymchurch Road, New Romney, TN28 8AY.

Payment

A purchase order number will be raised for the successful contractor, who will be responsible for undertaking works

The contractor will be expected to keep a time sheet of the work undertaken

Warning must be given to the Heritage Officer as to submission of an invoice

Payment will not be made until Kent Wildlife Trust is satisfied with the extent and quality of the work undertaken as described by the invoice

Full payment will be made on completion of the work or as part payments where this is mutually agreed

Invoices are to be sent to The Heritage Officer, Kent Wildlife Trust, Romney Marsh Visitors Centre, Dymchurch Road, New Romney, TN28 8AY.

Payment will be made within 30 days of receipt.

