



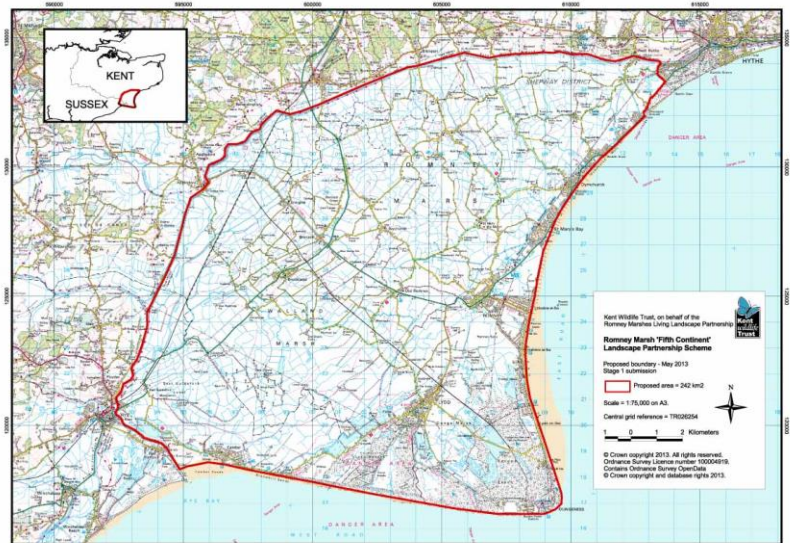
LOTTERY FUNDED

SPECIFICATION FOR THE SENTINELS ON THE MARSH - FIFTH CONTINENT LANDSCAPE PARTNERSHIP SCHEME

Kent Wildlife Trust (KWT) on behalf of the Fifth Continent Landscape Partnership (FCLP) is seeking to appoint a 'Community Archaeology Consultant' as part of the Sentinels on the Marsh Project for the Fifth Continent Landscape Partnership Scheme funded by the Heritage Lottery Fund (HLF).

Background

Romney Marsh is a landscape of remote countryside, open skies and tranquil villages. In parts nationally and internationally important for wildlife, the Marsh supports a wide range of habitats and many rare and endangered species of plant and animal. They are also of great historical importance, containing the Royal Military Canal – the third longest defensive monument in the British Isles – together with several of the Cinque Ports, and many medieval churches and other heritage features. Consequently, the area is protected by a range of designations including Site of Special Scientific Interest (SSSI), Special Area of Conservation (SAC), National Nature Reserve (NNR), Local Wildlife Site (LWS) and Scheduled Ancient Monument (SAM). However, over the last few decades, the Romney Marsh landscape has changed dramatically through the intensification of arable farming and increase of turf growing. In addition, most of the remaining grazing marsh is now improved grassland. There has also been an increase in tourism and industry, including the nearby Dungeness power stations. Despite the economic prosperity brought to the area by these activities, the area still has some of the most deprived wards in England and the area is now faced by the challenge of how to maintain sustainable rural communities, protect the unique heritage of Romney Marsh and increase the quality of life for local people in the current financial climate and with the decommissioning of Dungeness A and decommissioning of Dungeness B an imminent prospect.



The Romney Marsh Living Landscape is of distinctive character, supports sustainable farming, is rich in wildlife and history, and is enjoyed as a place to live, work and spend leisure time. The Fifth Continent Scheme is an initiative by the Romney Marsh Living Landscape Partnership which secured funding from the Heritage Lottery Fund (HLF) for a variety of investigations, habitat improvements, community engagement opportunities and training programmes for the people and wildlife of the Romney Marsh area. Kent Wildlife Trust is leading on the Scheme. The geographical area covered by the Fifth



continent Scheme is the land to the South and East of the Royal Military Canal, inside the red boundary. The Eastern boundary stretches to West Hythe.

The Fifth Continent Scheme aims to deliver a suite of projects outlined in the Landscape Conservation Action Plan (LCAP) which will enhance our existing knowledge base regarding the heritage and development over time of Romney Marsh and its unique landscape; provide a clearer understanding of the current condition of both the physical and socio-economic resilience of the area; and fully engage local communities and other stakeholders in acknowledging, strengthening, protecting and celebrating all that makes this landscape so important. Through this process the many diverse communities, habitats and landscapes of the Marsh will be better equipped to demonstrate the resilience that has created the Romney Marsh landscape in the first place. The strategic aims of the Landscape Partnership Scheme are:

- Facilitate the restoration, recreation and enhancement of the built and natural heritage of the area
- Put the communities and people of the Marsh back at the centre of their landscape and heritage and enhance opportunities for visitors and locals alike
- Develop opportunities for learning and skills development

An application by the Fifth Continent Project Board (led by Kent Wildlife Trust) to the HLF Landscape Partnership Scheme has been successful. The Delivery Stage (which runs from March 2017 to June 2021) is now in progress. The Scheme comprises of a suite of projects. One of these is the Sentinels on the Marsh Project. This project aims to gain a better understanding of the historic churches across the Marsh and to put them back at the heart of their communities.

Available Funding

There is £11,400 available to cover 38 days of work @ £300 per day. The work will be funded through the Heritage Lottery Fund.

Timetable

This contract will commence in March 2019 and run until June 2021.

Programme of Work

The Community Archaeologist will only support actions in the Sentinels of the Marsh project that relate to the community archaeology project at St Martin's Field, New Romney. A detailed description of the work requirement is presented in the accompanying 'Fifth Continent Gap Analysis'.

Lost and Ruined Churches

- To assist with the geophysical survey weekend at St Martin's Field (up to 3 days) in spring 2019
- To assist with the excavation campaign 1 for St Martin's Field over 2 weeks (up to 10 days) in summer 2019
- To assist with Excavation Campaign 2 for St Martin's Field over two weeks (up to 10 days) in summer 2019 or 2020
- To assist in Excavation Campaign 1 and 2 post- excavation activities including contribution to a short interim report (up to 8 days)
- To assist the Heritage Officer and Churches Consultant (contractor) to draw together St Martin's Field work (including conclusions reached by finds specialists) into a final report (up to 7 days)

TOTAL = 38 days

Outputs

On site assistance with the St Martin's Field community archaeology project

Assistance with the post-excavation work including provision of text for reports

Assistance with writing the final project report for the St Martin's Field project

Community Archaeologist Skills Required

Experience of carrying out archaeological excavations to at least supervisor level
Experience of urban archaeology fieldwork
Awareness of health and safety issues in as much as they apply to community archaeology projects
Experience of working with volunteers, including education groups, on fieldwork projects
Experience of delivering training for volunteers on site
Experience of working with volunteers on post-excavation activities
Experience of producing reports of community archaeology activities

Desirable skills

Osteo-archaeological experience

Special Considerations

The Community Archaeologist will work closely with the Heritage Officer to develop and deliver the 'Programme of work' elements listed above. He/She should be aware that a Churches Consultant will be assisting the Heritage Officer with the delivery of the St Martin's Field campaigns too.

The final reports will be the property of Kent Wildlife Trust. All those involved in their compilation will be credited.

The Community Archaeologist (consultant) will be required to sign a contract covering the works outlined in this brief.

Those submitting a bid should also read the project details provided alongside this brief.

Health and Safety

The contractor will exercise all reasonable skill, care and diligence in undertaking and carrying out work and will work to adequate health and safety regulations

The contractor will be required to have £5M public liability insurance cover

Communication

The Heritage Officer will be the main point of contact for the implementation of this contract

Any queries or difficulties in implementing the project would be communicated to the Heritage Officer as soon as possible as they will be keeping relevant partners from the Fifth Continent Project Board informed of progress, difficulties etc.

Submission of Quote

Experience

The contractor is required to outline their qualifications and/or experience of undertaking similar work outlined within this specification. Examples of previous work may be listed or provided.

Presentation

The contractor is at liberty to present his/her quote (and supporting information) in any format they feel would best present their case. Provision of an itemised timetable would be welcomed.

Quote Contact

Quotes are to be submitted by January 31st 2019 via email to Lucie.Bolton@kentwildlife.org.uk or by post to The Fifth Continent Heritage Officer, Kent Wildlife Trust, Romney Marsh Visitors Centre, Dymchurch Road, New Romney, TN28 8AY.

Payment

A purchase order number will be raised for the successful contractor, who will be responsible for undertaking works.

The contractor will be expected to keep a time sheet of the work undertaken.

Warning must be given to the Heritage Officer as to submission of an invoice.

Payment will not be made until Kent Wildlife Trust is satisfied with the extent and quality of the work undertaken as described by the invoice.

Full payment will be made on completion of the work or as part payments where this is mutually agreed. Invoices are to be sent to The Heritage Officer, Kent Wildlife Trust, Romney Marsh Visitors Centre, Dymchurch Road, New Romney, TN28 8AY.

Payment will be made within 30 days of receipt.

